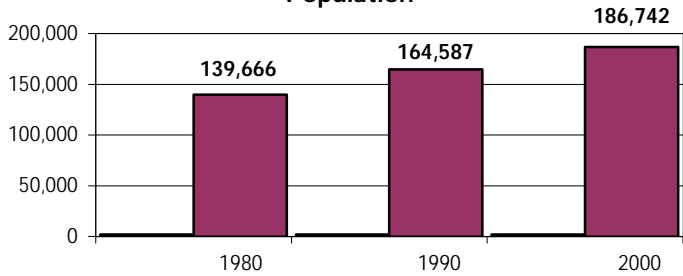


# York County Demographics

**Population**

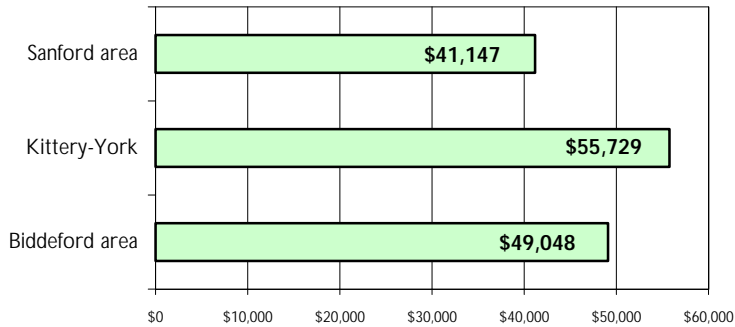


<b>Median Age (2000)</b>	38.5
<b>Average local tax rate (2000)</b>	13.53
<b>Valuation (2002)</b>	\$14,590,700,000

## Education

<b>High School Dropout Rate</b>	3.14%
---------------------------------	-------

**Median Household Income (2002)**



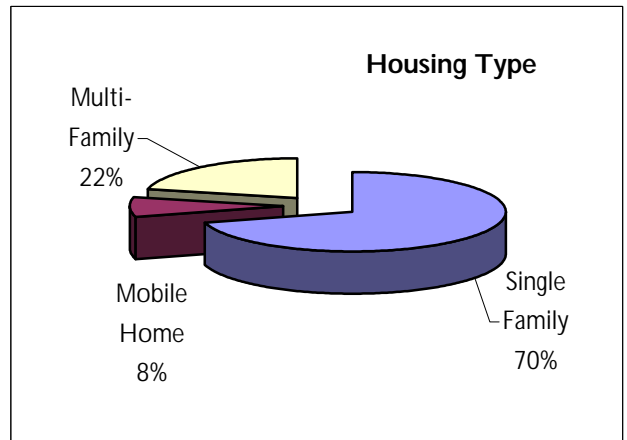
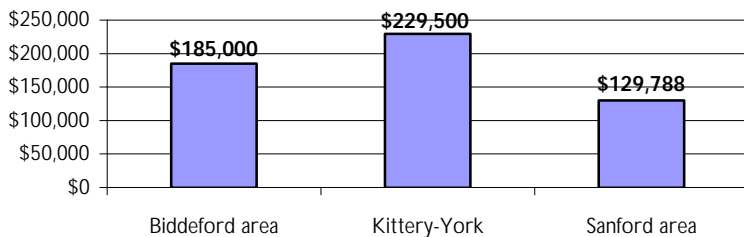
<b>Higher Education</b>	<b>Enrollment</b>
University of Maine, Saco	
University of Maine, Sanford	
University of New England, Biddeford	3,500-3,750
York County Technical College	475-500
<b>% High School Graduates</b>	87%
<b>% College Graduate &amp; Higher</b>	23%

## Housing

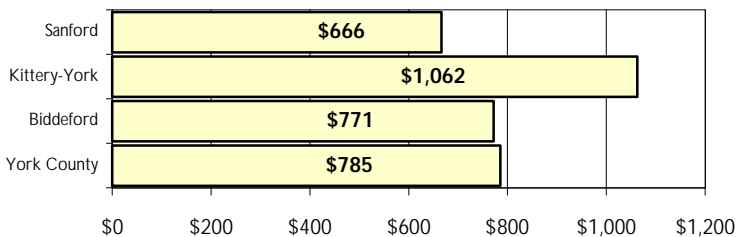
<b>Housing Units (2000)</b>	94,234
<b>Building Permits (2001)</b>	1,413

<b>Average Household Size</b>	2.47
<b>% Owners</b>	72.6%

**Median Home Sales Price (2002)**



**Average Rent for 2-BR with Utilities (2001)**



<b>Rental Vacancy Rate</b>	5.4%
<b>% Renters</b>	27.4%

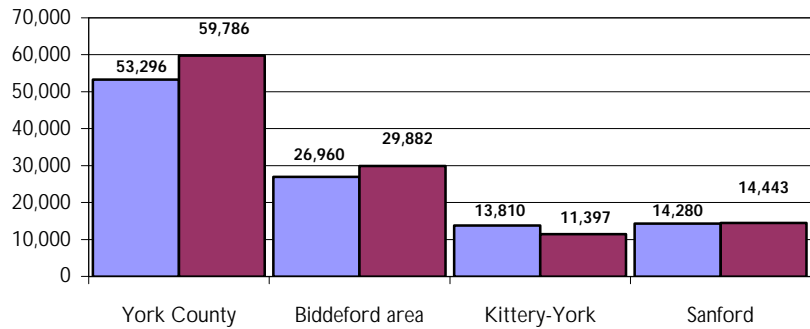
## York County Economy

<b>Labor Force (2002)</b>	102,080		
<b>Economic Clusters</b>	Advanced Composites	Aircraft Manufacturing	Tourism
	Food Processing	Fabricated Metal	Electronics
	Leather Products	Shipbuilding	

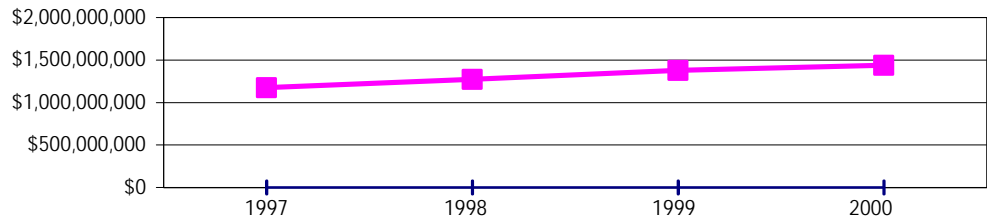
### Commercial Space

- Airport Industrial Park, Biddeford
- Alfred Road Industrial Park, Biddeford
- Biddeford Industrial Park
- Exit 4 Business Park, Biddeford
- Portsmouth Naval Shipyard, Kittery
- Sanford Industrial Development Park
- Composites Technology Center, Sanford
- Sanford Millyard
- Saco Industrial Park
- Saco Plaza
- Wells Busines Park

**Job Growth, 1997-2001**



**York District Consumer Retail Sales**



## Infrastructure

<b>Utilities</b>	Central Maine Power, Northern Utilities	
<b>Telecommunications</b>	Verizon, Time Warner, Oxford Networks	
<b>Public Sewer</b>	Berwick, Biddeford, Kennebunk, Kennenbunkport, Limerick, Ogunquit, Saco, Sanford, South Berwick, Wells, York	
<b>Airports</b>	Biddeford Municipal Airport, Sanford Municipal Airport	
<b>Rail</b>	Amtrak Downeaster with stops in Wells, Saco, Old Orchard Beach	
<b>Ports &amp; Terminals</b>	Portsmouth Naval Shipyard	
<b>Freight</b>	Springfield Terminal Railway, Saco Industrial Track	
<b>Bus</b>	ZOOM	Biddeford-Saco-Portland
	Shuttlebus	Biddeford-Saco-Old Orchard Beach
	The WAVE	Sanford-Springvale-Wells
	My Bus	Sanford-Springvale
<b>Regional Trail Systems</b>	Eastern Trail	Kittery-South Portland
	Mountain Division Trail	Windham-Fryeburg via Limington, Cornish
<b>Health Care</b>	Henrietta D. Goodall Hospital	Sanford
	Southern Maine Medical Center	Biddeford
	York Hospital	York

## Jobs

### Largest Non-Municipal Employers (SIC code)

#### Over 1,000 Employees

Portsmouth Naval Shipyard (3731)

Pratt & Whitney (3724)

#### 500-999 Employees

Sweetser (8361)

Southern Maine Medical Center (8062)

Spencer Press (2752)

Interstate Brands Corp. (2051)

York Hospital (8062)

University of New England (8221)

Goodall Hospital (8062)

#### 250-499 Employees

Weathervane Seafoods (5812)

William Arthur, Inc. (2678)

Hussey Seating Co. (2531)

Community Partners Inc. (8361)

Westpoint Stevens Inc. (2392)

Funtown Splashtown USA (7996)

Cyro Industries (3081)

Shaws -Wells Distribution Ctr (5411)

Kittery Trading Post (5941)

Corning Incorporated (3089)

GH Bass & Co. (5651)

Prime Tanning Co. Inc. (3111)

#### 100-249 Employees

Visiting Nurse Service (8082)

Wal-Mart (5311)

General Dynamics-Saco Defense (3484)

Counseling Services (8093)

Camp Waban (8322)

Sanford Precast (3272)

Biddeford Textile Corp. (2221)

Primecare Physician Associates (8011)

Wood Structures Inc. (2439)

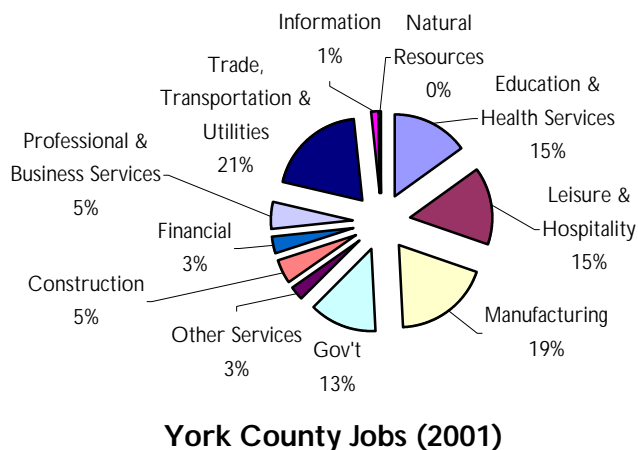
The Goldenrod (2064)

Sprague Sanford (3675)

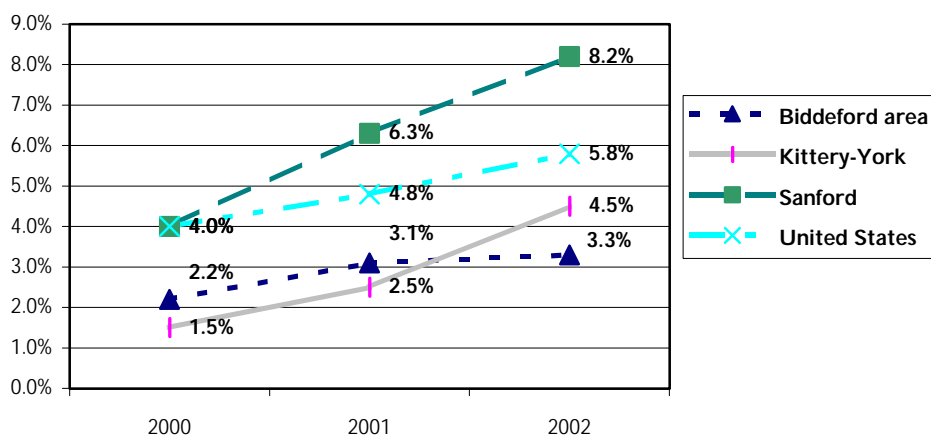
U.S. Post Office (4311)

Hannaford Brothers (5411)

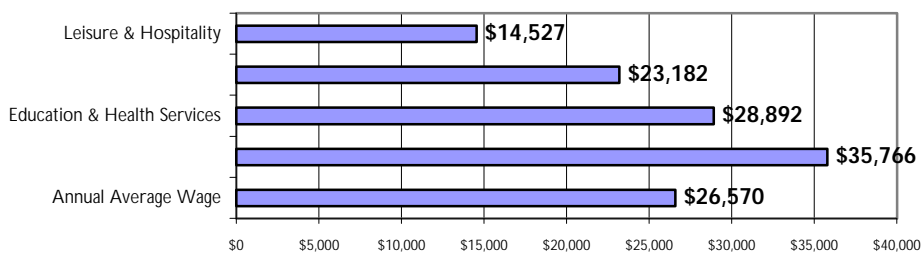
JHM Enterprises-McDonalds (5812)



### Unemployment Rate



### York County Annual Wages (2001)









Enrollment



