

PACTS

Portland Area Comprehensive Transportation Committee December 2006 Annual Report

Welcome to PACTS

PACTS, the Portland Area Comprehensive Transportation Committee, is the federally mandated metropolitan planning organization (MPO) for the Portland region. We are responsible for carrying out a *continuing, cooperative and comprehensive* (“3-C”) transportation planning process for urban areas with populations of at least 50,000.



The **PACTS** region includes: Biddeford, Cape Elizabeth, Cumberland, Falmouth, Freeport, Gorham, North Yarmouth, Old Orchard Beach, Portland, Saco, Scarborough, South Portland, Westbrook, Windham and Yarmouth.

PACTS provides a forum for cooperation and public input into funding decisions among its member communities, the Maine Department of Transportation (MaineDOT), the Maine Turnpike Authority (MTA), the Greater Portland Council of Governments (GPCOG), the Southern Maine Regional Planning Commission (SMRPC), transit operators, federal agencies, and other public and private transportation organizations. Using a multi-step strategic planning process, our focus is on outcomes within the context of broad community and regional concerns. Responsibilities include evaluation and approval of proposed transportation improvement projects, sponsoring and conducting transportation studies, monitoring of compliance with national air quality goals and standards, and collaborating with and assisting other planning agencies.

Staff and Committee Changes

We would like to take this opportunity to welcome our new Committee officers:

- ◆ **Policy Committee Chair:** Richard Michaud, Saco City Administrator
(Mike Bobinsky, Vice-Chair)
- ◆ **Technical Committee Chair:** Bob Burns, Gorham Public Works Director
(Jennifer Franceschi, Vice-Chair)
- ◆ **Planning Committee Chair:** Donna Larson, Freeport Town Planner
(Greg Tansley, Vice-Chair)
- ◆ **Transit Committee Chair:** Tom Meyers of South Portland Bus Service
(Connie Garber, Vice-Chair)

In November 2005 the PACTS staff increased from two to three. We would like to welcome Julia Dawson as the newest member of the PACTS team. Julia graduated from the University of Southern Maine with a degree in Environmental Science and Policy.

www.pactsplan.org

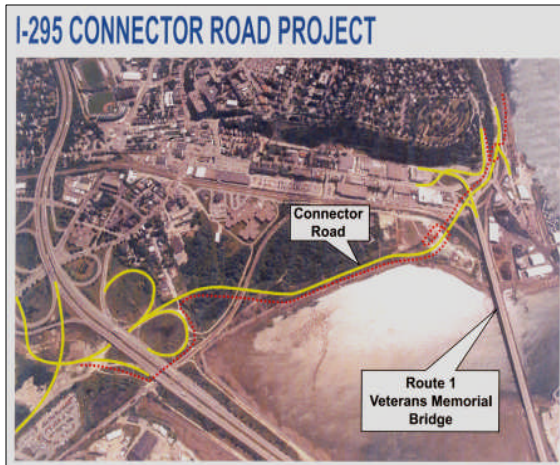
The PACTS website is currently undergoing a major overhaul. The new site will provide current and historic PACTS documents, maps and other transportation-related data. We hope the new and improved website will provide a user friendly format that will encourage the public to become more aware of the PACTS process. Please visit www.pactsplan.org and explore the new site.

Highlights and Accomplishments

The last eighteen months have been an exciting time here at PACTS. Maine's first Compressed Natural Gas (CNG) vehicle refueling station was launched along with the deployment of 13 CNG transit buses operated by Greater Portland METRO. Three school buses operated by the Portland School Department are also using the fueling station. Maine Clean Communities played a key role in this \$6.5 million project. METRO hopes to replace their entire rolling stock with new CNG buses over the coming years.



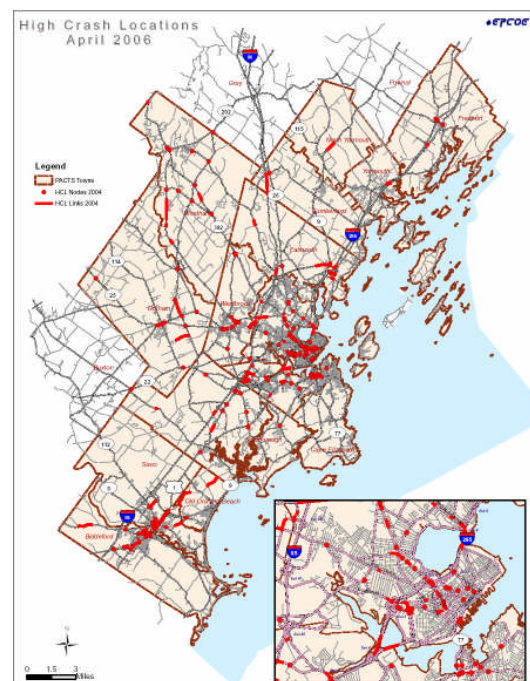
METRO Compressed Natural Gas (CNG)
Vehicle Refueling Station.



Another significant highlight was the \$23 million Portland I-295 Connector which opened on November 18, 2005. The one-mile span of highway and its three bridges connect the outer Congress Street Exit of I-295 with Portland's working waterfront. The Connector will increase safety and improve traffic flow by diverting traffic away from busy city streets. In addition, the new direct route to Commercial Street and the waterfront will enhance economic growth opportunities for the region.

Maintaining safety is crucial to an efficient transportation system.

Destination Tomorrow—the PACTS long-range transportation plan—is committed to correcting the region's "high crash locations". PACTS worked closely over the last year with the MaineDOT Safety Office and local municipalities to identify the region's worst locations. In August 2006, PACTS submitted nine high crash locations along with corrective counter-measure recommendations to the Department. It is our understanding that the Commissioner will sign off on six of these locations making funding available in 2007.



Destination Tomorrow 2006 — PACTS Long-range Regional Transportation Plan



Linking Our Communities • Advancing Our Region

Destination Tomorrow 2006 is a substantial update to Destination Tomorrow 2003 and reflects PACTS' expansion to fifteen communities. **Destination Tomorrow** provides a vision for the transportation system of the Greater Portland region through 2030 and calls for an increased level of coordination between our transportation planning and funding partners. The Plan addresses current problems of congestion, safety, mobility and accessibility while acknowledging today's social, political and fiscal realities. The Plan also recognizes the impacts that transportation investments may have on health, social equity and the environment.

Destination Tomorrow is organized around Six Goals and Eight Guiding Policies. Working towards realizing the Plan's Vision, PACTS and its members' efforts in the near-term will be focused in the following six broad areas:

1. **Maintenance and Improvement** — Maintaining and improving the existing transportation system.
2. **Key Intersections** — Addressing safety and mobility at key intersections in the region.
3. **Land Use** — Strengthening the link between transportation investments and land use planning and policies.
4. **Public Transportation** — Expanding, appropriately, the availability and range of public transportation services.
5. **Funding** — Continuing to explore additional funding opportunities and sources.
6. **Interstates** — Continuing to support MaineDOT and Maine Turnpike Authority efforts and investments on the region's interstates.

DESTINATION TOMORROW 2006
Linking Our Communities—Advancing Our Region

A collage of five images illustrating transportation themes. The top row shows "LAND USE" (aerial view of a residential area) and "INTERSTATES" (aerial view of a highway interchange). The middle image shows a group of people in a meeting. The bottom row shows "MULTI-MODAL" (a bus and a pedestrian on a street) and "INFRASTRUCTURE" (aerial view of a road through a residential area).

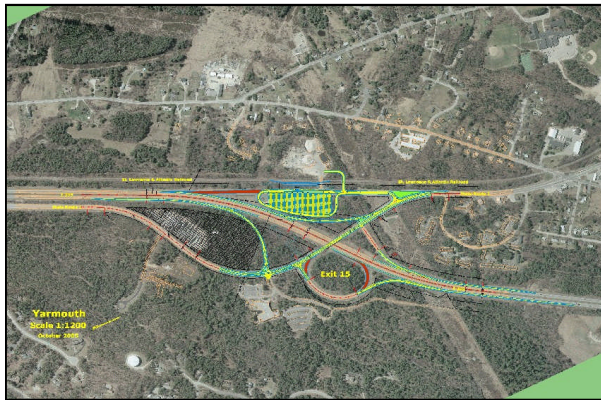
Portland Area Comprehensive Transportation Committee
(PACTS)
June 2006

Copies of the Plan may be viewed or downloaded at

www.pactsplan.org

Completed Studies

In 2006 the MaineDOT wrapped up their **I-295 Corridor Study**. The purpose of the study was to evaluate the long-term needs of the I-295 corridor between Scarborough and Brunswick, while identifying a set of recommendations to provide safe and efficient transportation service through the year 2025. The MaineDOT worked closely with multiple stakeholders to make certain the public's voice was heard. There were eight corridor advisory committee meetings and six public information meetings held between December 2003 and February 2006.



Conceptual Plan for I-295 Exit 15 in Yarmouth

Alternative strategies considered included:

- ☛ Auxiliary Lane Improvements
- ☛ Intelligent Transportation Systems
- ☛ Transportation Demand Management
- ☛ Commuter Transit Services
- ☛ Interchange Improvements
- ☛ Added Highway Capacity

Cumberland Mills Long-Range Traffic Improvement Study, funded in part by PACTS and prepared by Sebago Technics, was accepted by the MaineDOT in August 2005. The purpose of the study was to develop a long-term improvement strategy in terms of capacity and safety for the intersections of Warren Avenue, Main Street and Cumberland Street. Preliminary engineering for the preferred alternative was funded with the PACTS 2008-2009 allocation.

The **Freeport Comprehensive Transportation Study**, prepared by Milone & Mac Broom, Inc., in association with Eaton Traffic Engineering, was completed in 2005. A number of roadway & intersection improvements were recommended to address projected capacity, operational and safety deficiencies.

Recommendations were identified at these locations:

- ☛ I-295 southbound off ramp at Hunter and Desert Road
- ☛ Lower Main at Pine Street
- ☛ Route 136 at Griffin Road (Rout 125)
- ☛ Route 136 at Mallett Drive/Pownal Road
- ☛ US Route 1 at South Freeport Road



Main Street Downtown Freeport

The **METRO/SPBS On/Off Survey** reported on passenger trips and miles. The survey included all routes of the METRO bus service and the South Portland Bus Service.

Storm Water Education - public outreach and continuing education on the region's storm water system.

Old Orchard Beach Rotary - feasibility study for a rotary at the complex intersection known as the Halfway. The preferred alternative was funded for preliminary engineering with the PACTS 2008-2009 MPO Allocation.

Portland Peninsula Traffic Plan (waiting to be adopted) - comprehensive traffic analysis of the Portland Peninsula.

Saco Traffic Signal Inventory catalogued the existing traffic signal equipment with respect to its ability to accommodate emergency vehicle pre-emption, video detection and interconnection of signals.

The Year Ahead

High Priority Projects – High Priority Projects, formerly known as Congressional Earmarks, have become more prevalent and represent a significant portion of transportation funding. A High Priority Project Subcommittee was formed in 2006 as part of PACTS' ongoing efforts to explore additional transportation funding opportunities. The group will meet on a regular basis until the next reauthorization in 2009, and will work closely with the PACTS Policy Committee, MaineDOT and Maine's Congressional Delegation. The Subcommittee will develop a short list of project proposals, and will work hard to impress Maine's Congressional Delegation as to their regional importance and significance.



South Street approaching Routes 22/114 in Gorham

Gorham Bypass - Phase one of the long awaited Gorham Bypass is scheduled to start construction in the spring of 2007.

This project has been the subject of more than 15 different studies over the last 45 years. The final design is a two-lane controlled access southwesterly bypass of Gorham Village that will connect Route 114 just south of Waterhouse Road to Route 25 west of Cressy Road. Funding for the new bypass comes in part from a \$15.9 million Congressional High Priority Project.

Saco Regional Travel Demand Study — PACTS will provide funding to perform a study to determine the travel patterns in the Saco area. The analysis will serve as a foundation for future studies regarding long-term solutions for the Saco region. The focus of the study will be Scarborough, Old Orchard Beach, Biddeford and Saco.

Regional Collector Paving Program — Staff and the Technical Committee will continue to develop PACTS' paving program. Improvements will more clearly define what projects are eligible and how built and unbuilt roads will be handled. A repository will be created to gather historical and ongoing paving data for the region's collector road system. The necessary training will be provided to all parties involved to ensure cohesion on a project's need, scope, cost estimate and time frame.

Access Management Program — Staff will establish a continuing educational program that will assist municipalities in their attempt to incorporate best access management practices in their comprehensive plans, ordinances and site plan review processes. A technical toolbox will be generated to provide communication and planning strategies, testimonials of successful applications, and standardized guidelines.

Request for study proposals— It is that time of year again. In January, 2007 PACTS will start accepting requests for future studies to be included in the 2008-2009 Unified Planning Work Program (UPWP).

GPCOG Program Highlights

GPCOG serves as the federally-designated transit planning agency for Greater Portland. GPCOG provides PACTS with planning, mapping, payroll and support services, and office space. Below are several highlights from the GPCOG Annual Report, a full copy of which can be found at www.gpcog.org.



GO MAINE is the statewide commuter service providing access and information on commuter options, including carpool ride matching, an express vanpool service, transit, bicycling and walking to work.

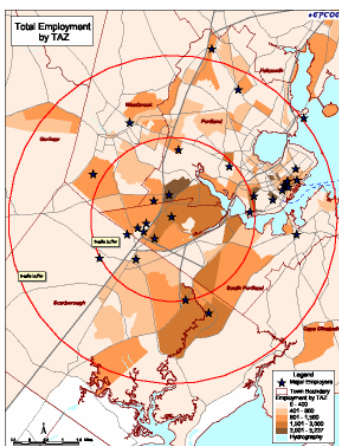
- ◆ Implemented an interactive online ridematching system offering fast customer service and reduced administrative costs.
- ◆ Aggressive campaign to reach out to employers and communities statewide through on-site presentations, business and human resource associations, direct mail, e-marketing and media campaigns.
- ◆ The commuter database was increased by 23% due to outreach efforts, high fuel prices and global energy instability.
- ◆ This year's Commute Another Way Day theme was "It's time to be Fuel Efficient" and it attracted tremendous support and participation from employers and commuters.



Regional Transit Study

Destination Tomorrow Strategy 36, Transit Coordination seeks to "Continue the efforts of the PACTS Transit Committee and the Peninsula Transit Operations Group to coordinate transit service, fares and operations in the region. These efforts should include studying the feasibility of regionalizing the seven public transit service providers, potentially into a regional transit authority or other more cost-effective and streamlined structure."

GPCOG and SMRPC serve as the primary staff to the study committee which is comprised of the managers of the seven public transit services in the region and three PACTS Policy Committee appointees. The Committee will complete its work in May 2007. Products to date include: a comparison of New England Transit District/Authority Policies; examples of consolidation from other parts of the country; consolidation criteria; consolidation steps; and an inventory and analysis of capital and operating revenues and expenses from all the providers.



Emergency Evacuation & Detour Planning

GPCOG and Cumberland County Emergency Management Agency Staff completed an evacuation and detour plan for a 2.5 mile study area around the Maine Mall and Fairchild Semiconductor. The study area has a total population of 22,800 and total employment of 53,500. The working group identified two days for worst case evacuation scenarios: Black Friday (the day after Thanksgiving) and Camper Friday (the third weekend in July).

Policy Committee

Neal Allen, GPCOG Executive Director
Mike Bobinsky, Vice-Chair, Portland Public Works Director
Jerre Bryant, Westbrook City Administrator
John Bubier, Biddeford City Manager
David Cole, Gorham Town Manager
Dale Doughty, MaineDOT Acting Director of Planning Division
Katherine Earley, Portland Engineering Manager
Jim Gailey, South Portland Dir. of Community Development
Connie Garber, YCCAC, Transportation Director
Joe Gray, Portland City Manager
Tex Haeuser, South Portland City Planning Director
Dave Libby, Falmouth Town Councilor
Michael McGovern, Cape Elizabeth Town Manager
Tom Meyers, South Portland Trans. & Waterfront Mgr.
Rick Michaud, Chair, Saco City Administrator
Jeff Monroe, Portland Director of Transportation
Dale Olmstead, Freeport Town Manager
Ron Owens, Scarborough Town Manager
Tony Plante, Windham Town Manager
Tom Reinauer, Paul Schumacher, SMRPC
Scott Seaver, North Yarmouth Administrative Assistant
Bill Shane, Cumberland Town Manager
Jim Thomas, Old Orchard Beach Town Manager
Nat Tupper, Yarmouth Town Manager
Conrad Welzel, MTA, Manager of Government Relations



Rick Michaud
Policy Committee Chair

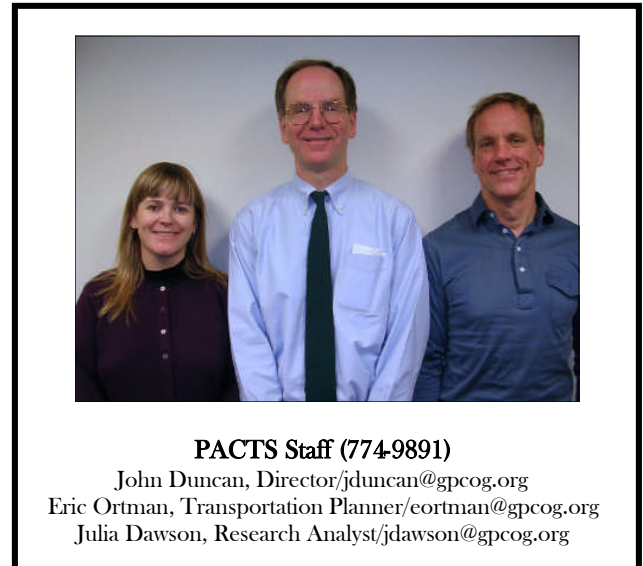


Freeport Town Hall

Donna Larson
Planning Committee Chair
Photo not available

Planning Committee

Wayne Davis, Policy Committee Appointee, TrainRiders Northeast
Dawn Emerson, Yarmouth Town Planner
Deborah Fossum, Gorham Town Planner
Tex Haeuser, South Portland Planning Director
Alex Jaegerman, Portland Planning Division Director
Mike Laberge, MaineDOT MPO Coordinator
Jonathan LaBonte, MTA Asst. Mgr. of Government Relations
Donna Larson, Chair, Freeport Town Planner
Steve Linnell, GPCOG Senior Transportation Planner
Jon McNulty, Public Transportation RTP Executive Director
Brooks More, Westbrook City Planner
Peter Morelli, Saco Economic Development Director
Sandra Mowery, Old Orchard Beach Community Development Dir.
Carla Nixon, Cumberland Town Planner
Maureen O'Meara, Cape Elizabeth Town Planner
Tom Reinauer, Transportation Director, SMRPC
Greg Tansley, Vice-Chair, Biddeford City Planner
George Theborge, Falmouth Town Planner
Joe Ziepniewski, Scarborough Town Planner
Open (3 seats), No. Yarmouth, Windham, Policy Committee Appointee

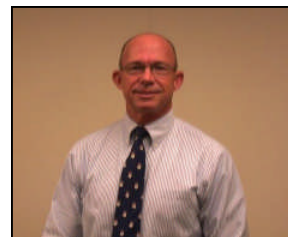


PACTS Staff (774-9891)

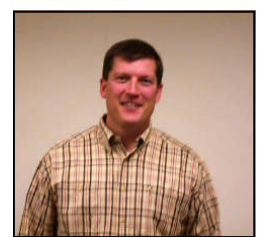
John Duncan, Director/jduncan@gpcog.org
Eric Ortman, Transportation Planner/eortman@gpcog.org
Julia Dawson, Research Analyst/jdawson@gpcog.org

Technical Committee

Dana Anderson, South Portland, Parks & P.W. Director
Mike Bolduc, Saco Public Works Director
Bob Burns, Chair, Gorham Public Works Director
Jim Carmody, Portland Transportation Engineer
Peter Cavanaugh, Public Transp., METRO Acting Gen. Mgr.
Don Chaisson, North Yarmouth Public Works Director
Mary Ann Conroy, Old Orchard Beach, Public Wrks. Dept.
Eric Dudley, Westbrook City Engineer
Doug Fortier, Windham Public Works Department
Jennifer Franceschi, Vice-Chair, Biddeford Planning Engineer
Tony Hayes, Falmouth Public Works Director
Dan Jellis, Yarmouth Town Engineer
Mike Laberge, MaineDOT MPO Coordinator
Jonathan LaBonte, MTA Asst. Mgr. of Government Relations
Josh Mack, Transportation Planner, SMRPC
Robert Malley, Cape Elizabeth Public Works Director
Adam Ogden, Cumberland Public Works Director
Albert Presgraves, Freeport Town Engineer
Jim Wendel, Scarborough Town Engineer & Assistant Planner
David Willauer, GPCOG Planning Director



Tom Meyers
Transit Committee Chair



Bob Burns
Technical Committee

Transit Committee

Sara Behr, MaineDOT, Office of Passenger Transportation
John Bubier, Policy Committee Appt., Biddeford City Mgr.
Peter Cavanaugh, METRO General Manager
Pat Christian, CBITD General Manager
Ed Clifford, ShuttleBus/ZOOM Executive Director
Patricia Douglas, NNEPRA Executive Director
Connie Garber, Vice-Chair, YCCAC Transportation Dir.
Tom Gorrill, Policy Comm. Appt., Gorrill-Palmer President
Tom Meyers, Chair SPBS So. Ptd. Trans. & Waterftrt. Mgr.
Jon McNulty, RTP Executive Director
Conrad Welzel, MTA Government Relations Manager
Private Sector